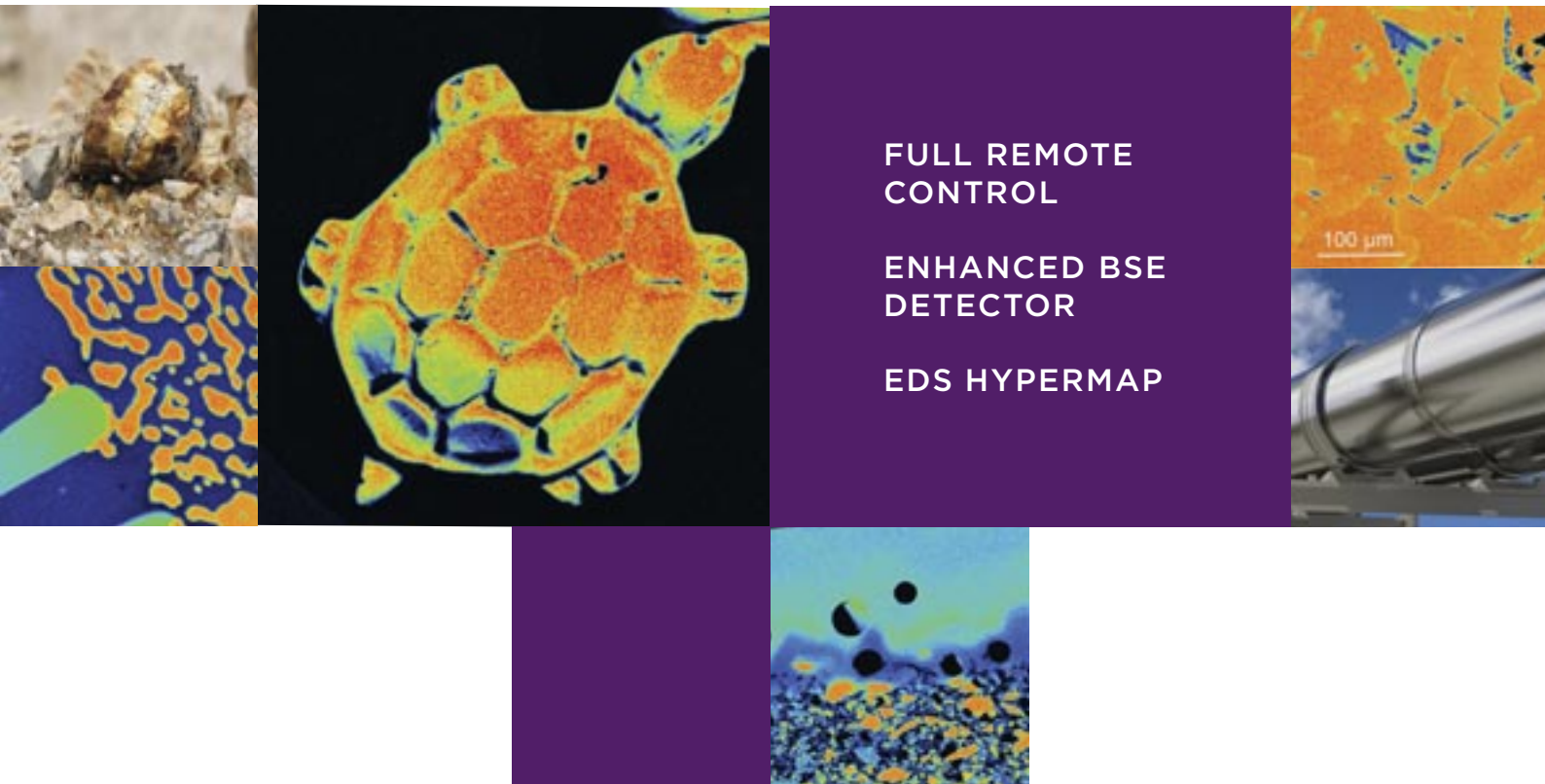


# Upgrade your SXFive



FULL REMOTE CONTROL

ENHANCED BSE DETECTOR

EDS HYPERMAP

## Add TACTIS features to your SXFive!

Four upgrade levels are available.

Upgrade level	Added feature(s)		
	Full Remote Control	Enhanced BSE Detector	EDS Hypermap
<b>Globetrotter</b>	●		
<b>Eagle-eye</b>	●	●	
<b>Horizon</b>	●		●
<b>Absolute</b>	●	●	●

Please contact your local CAMECA service team for details.

# Add TACTIS features to your SXFive!

GLOBETROTTER  
 EAGLE-EYE  
 HORIZON  
 ABSOLUTE

## Full Remote Control

The new electronics and software interface offer full remote control, including SEM imaging, allowing users to run experiments from anywhere.

### Beginner or expert: choose your interface

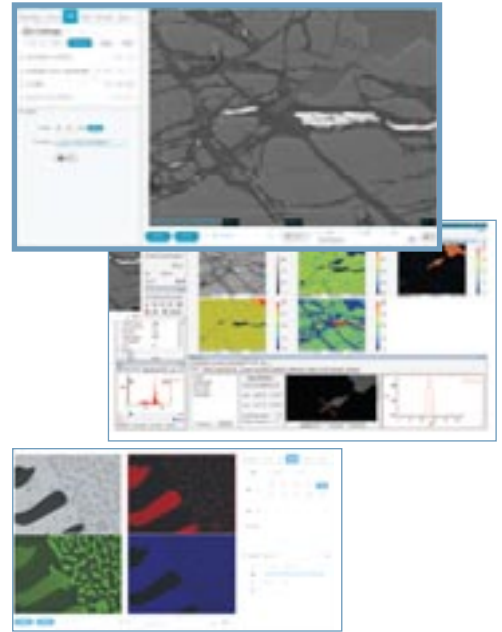
- In beginner mode, the instrument configuration, tool operation as well as basic imaging and data processing are made easier.
- In expert mode, you can still use the PeakSight interface and access all tool parameters and software options.

### XLive

This feature allows the acquisition of realtime WDS and EDS X-ray images in one click, producing a rapid, yet meaningful overview of the specimen composition.

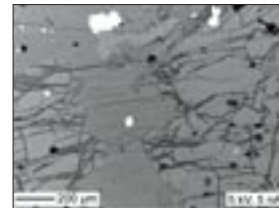
### Assisted quantification

The new Quanti tool greatly facilitates the quantification process, allowing non-experts to easily obtain accurate elemental composition of their samples.



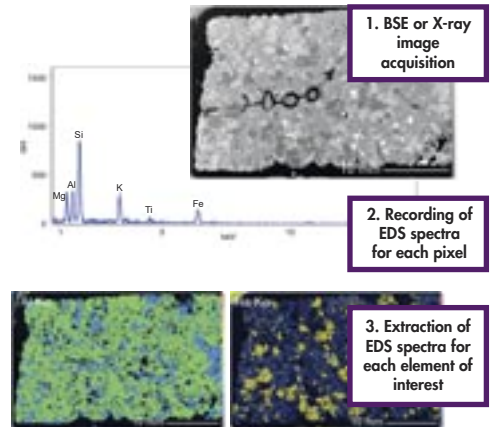
## Enhanced BSE Detector

Equip your SXFive with an additional BSE detector allowing superior image quality, especially at low voltage and/or low beam currents. It will enable you to quickly and more accurately identify the areas of interest in your sample and achieve better detection of trace elements.



## EDS Hypermap

The EDS Hypermap option stores a full EDS spectrum at each map pixel. Therefore, individual x-ray maps for all EDS-detectable elements can be extracted from collected data, without taking additional time to acquire more maps.



Upgrade level	Added feature(s)		
	Full Remote Control	Enhanced BSE Detector	EDS Hypermap
Globetrotter	●		
Eagle-eye	●	●	
Horizon	●		●
Absolute	●	●	●

Please contact your local CAMECA service team for details.